



Los Angeles  
County  
**Human Resources**  
YOUR CAREER STARTS HERE.

The County of Los Angeles recognizes that human milk is the optimal food for the growth and development of infants and encourages employees and management to have a positive accepting attitude toward employees who are breast/chestfeeding. The County of Los Angeles promotes and supports the expression of human milk by employees when they return to work after having a child.

In support of Lactation Awareness Month, every August the Department of Human Resources releases a series of four lactation-related newsletters to help bring awareness and education to County employees. Take a read and share with your colleagues, friends and family!



## 2023 NEWSLETTERS

[Week 1](#)

[Week 2](#)

[Week 3](#)

[Week 4](#)



## 2022 NEWSLETTERS

[Week 1](#)

[Week 2](#)

[Week 3](#)

[Week 4](#)



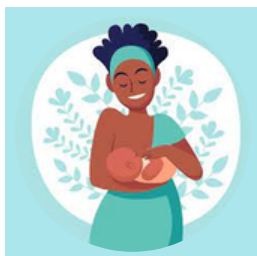
## 2021 NEWSLETTERS

[Week 1](#)

[Week 2](#)

[Week 3](#)

[Week 4](#)



## 2020 NEWSLETTERS

[Week 1](#)

[Week 2](#)

[Week 3](#)

[Week 4](#)



## 2019 NEWSLETTERS

[Week 1](#)

[Week 2](#)

[Week 3](#)

[Week 4](#)



[LactationProgram@hr.lacounty.gov](mailto:LactationProgram@hr.lacounty.gov)



213-738-3581



[https://employee.hr.lacounty.gov/  
lactationprogram-2/](https://employee.hr.lacounty.gov/lactationprogram-2/)